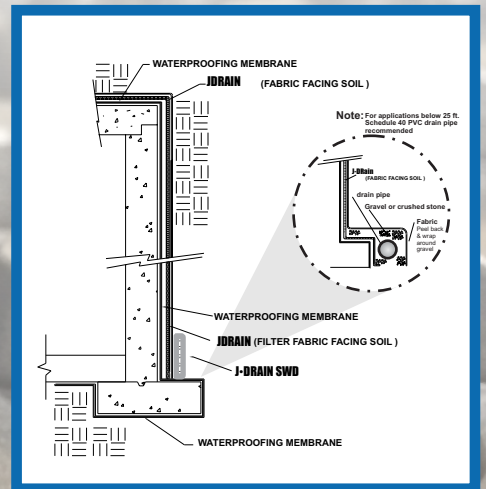
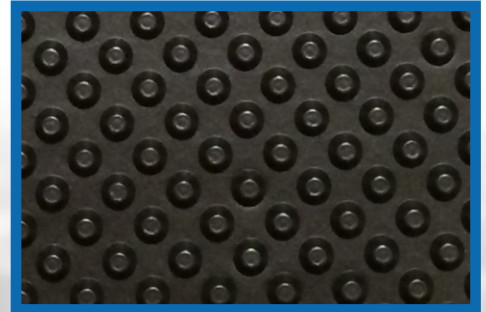




# J·DRAIN<sup>®</sup>

Prefabricated Drainage Composites

# Tunnels



**J-DRAIN<sup>®</sup> 150 Core Only** consists of a impermeable polymeric sheet cusped under heat and pressure to form a high flow, high compressive strength dimpled drainage core. **J-DRAIN 150 Core Only** conveys groundwater seepage from the tunnel wall and away from concrete for the tunnel lining.

**\*\*Note: J-DRAIN 400 Panning: Flame Retardant material available upon request.**

## Physical Properties

### Core

### Roll

Compressive Strength (ASTM D-1621)	5,200 psf 249 kNm <sup>2</sup>	Roll Weight	35,52,70 lbs.	16,23,32 kgs.
Thickness (ASTM D-1777)	.31 in. 7.87 mm.	Roll Width	4, *6.5, *8 ft.	1.22, 1.98, 2.44 meters
Flow (ASTM D-4716)	12.5 gpm/ft width	Roll Length	65 ft.	15.24 meters
Hydraulic gradient = 1	155 lpm/m width	<p><b>*Special orders for 6.5' &amp; 8' widths available upon request.</b>  <b>**J-DRAIN 150 Panning flame retardant material available upon request.</b></p>		

The information contained herein is believed by JDR Enterprises, Inc. to be accurate and is offered solely for the customer's consideration, investigation and verification. Determination of suitability for use is the responsibility of the user. JDR's Limitations, Limited Warranty, & Disclaimer along with Standard Terms & Conditions apply. See [www.j-drain.com](http://www.j-drain.com) for more info. **Limitations:** J-DRain is resistant to chemicals in normal soil environments. However, some reagents may affect the performance of J-DRain. A JDR representative should be contacted for further information to determine the suitability of use of J-DRain in unusual soil environments. J-DRain should be limited to its exposure to ultra-violet sunlight. J-DRain should be backfilled or covered within seven days of installation. **Disclaimer:** All information, drawings and specifications are based on the latest published information at the time of printing. JDR reserves the right to make changes due to manufacturing improvements and engineering at any time. All physical properties are minimum average roll values (MARV). Standard variations of 10% in mechanical properties and 15% in hydraulic properties are normal.

[info@j-drain.com](mailto:info@j-drain.com)

[www.j-drain.com](http://www.j-drain.com)

**JDR** Enterprises, Inc.

292 S. Main St., Suite 200 Alpharetta, GA 30009  
 (800) 843-7569 (770) 442-1461 Fax: (770) 664-7951