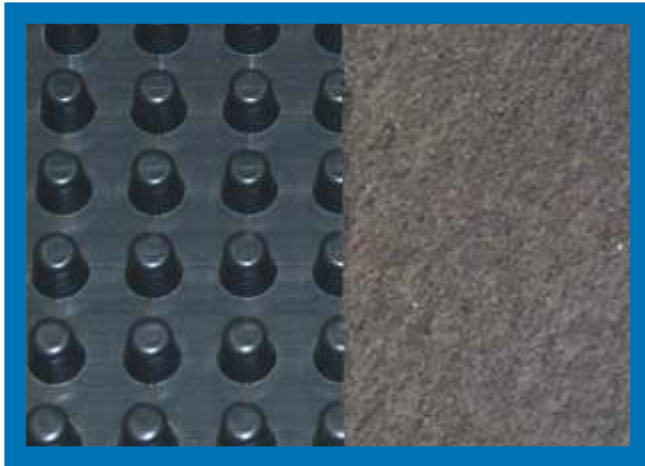


J-DRain[®] 200

Prefabricated Drainage Composites



APPLICATIONS

BASEMENT FOUNDATIONS

RETAINING WALLS

PLANTERS

BRIDGE ABUTMENTS

J-DRain[®] 200 Series

ESR-1901



J-DRain 200 Series Performs a multi-faceted role by providing protection for waterproofing systems and managing sub-surface water around building foundations. Soil back fill is retained by a filter fabric while allowing water to pass into the drainage core providing hydrostatic relief. Collected water is then conveyed to a proper collection system.

J-DRain[®] 200

Consists of a light duty impermeable polymeric sheet cusped under heat and pressure to form a high flow dimpled drainage core. The core is then bonded to a layer of non-woven filter fabric. The filter fabric retains soil or sand particles as well as freshly placed concrete or grout, allowing filtered water to pass into the drainage core. Limited to 20 feet of backfill.

J-DRain[®] 220

The identical properties as J-DRain 200 with the addition of a protection sheet bonded to the back side of the cusped core providing protection for soft membrane waterproofing systems. J-DRain 220 is compatible with waterproofing systems without the use of a protection board. Limited to 20 feet of backfill.

info@j-drain.com

www.j-drain.com

JDR Enterprises, Inc.

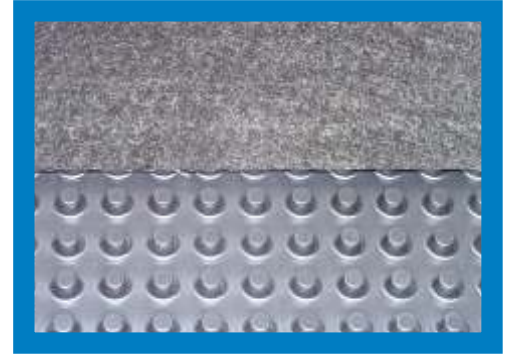
292 S. Main St., Suite 200 Alpharetta, GA 30009
(800) 843-7569 (770) 442-1461 Fax: (770) 664-7951

J-DRain[®] 200

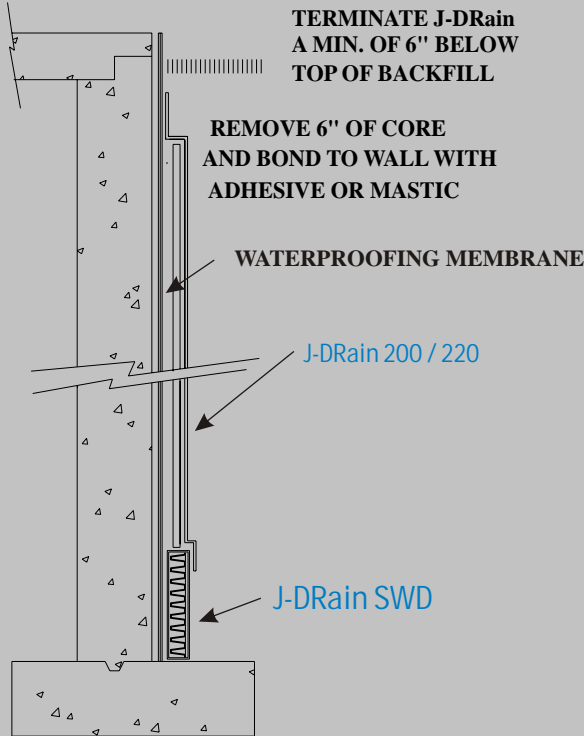
Prefabricated Drainage Composites



ESR-1901



*Alternate J-DRain 200 is available upon request.

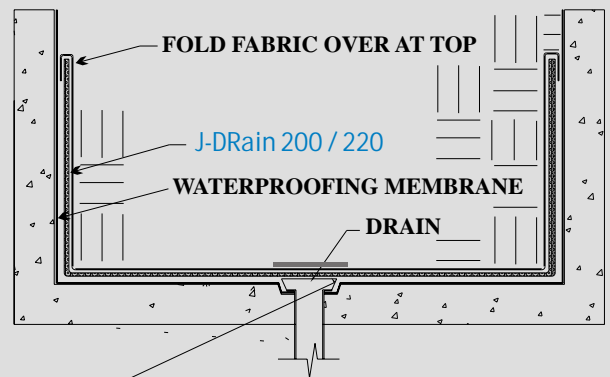


APPLICATIONS:

FOUNDATION WALL / RETAINING WALL

APPLICATIONS:

PLANTERS & ROOF GARDENS



NOTE: When using J-DRain 200 / 220 cut and remove drainage core and cover with an aluminum plate as shown.

Physical Properties

Core

Fabric

	Standard	Alternate
Compressive Strength (ASTM D-1621)	11,000 psf (528 kNm ²)	11,000 psf (528 kNm ²)
Thickness (ASTM D-1777)	.40 in. (10.16 mm)	.25 in. (6.35 mm)
Flow (Hydraulic gradient =1) (ASTM D-4716)	18 g/min/ft (223 L/min/m)	9 g/min/ft (112 L/min/m)
Roll Weight	38, 61, 80 lbs.	17, 27, 35 kgs.
Roll Width	4, 6.5, 8.5 ft.	1.22, 1.98, 2.59 meters
Roll Length	50 ft.	15.24 meters

Flow (ASTMD-4491)	140 g/min/ft ² 5704 l/min/m ²
Puncture (ASTMD-4833)	65 lbs. .30 kN
AOS(EOS)	70 U.S.Sieve .212 mm
Grab Tensile(ASTMD-4632)	100 lbs. .45 kN

Alternate J-DRain 200 not available in 6.5' & 8.5' roll widths.

*Alternate J-DRain 200 is available upon request.

The information contained herein is believed by JDR Enterprises, Inc. to be accurate and is offered solely for the customer's consideration, investigation and verification. Determination of suitability for use is the responsibility of the user.

info@j-drain.com

www.j-drain.com

JDR Enterprises, Inc.

292 S. Main St., Suite 200 Alpharetta, GA 30009
(800) 843-7569 (770) 442-1461 Fax: (770) 664-7951