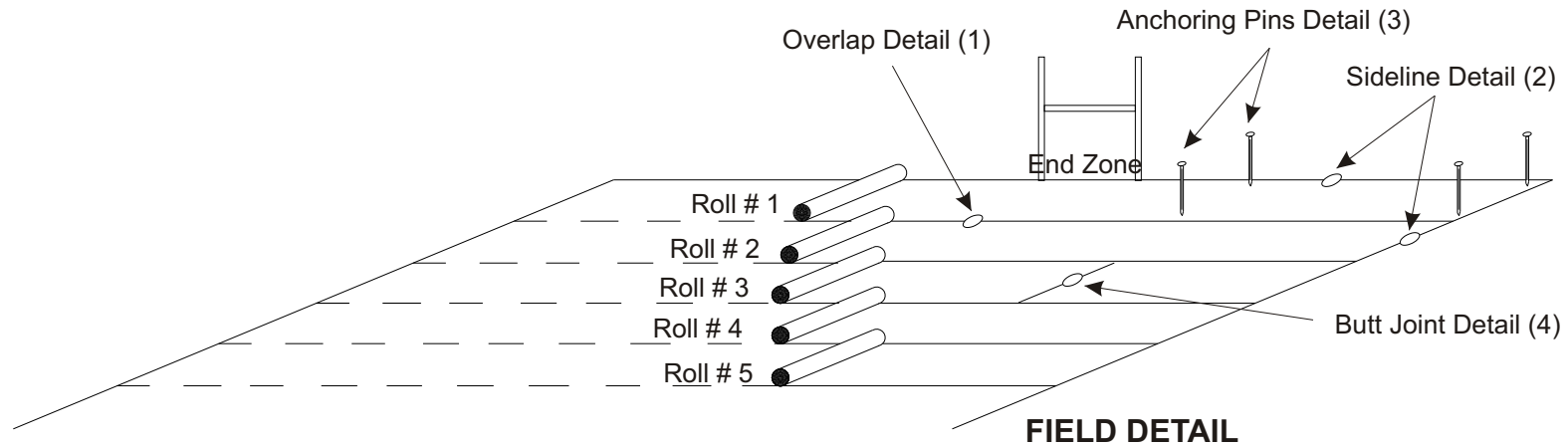


# INSTALLATION INSTRUCTIONS & DETAILS

Page 1 of 5



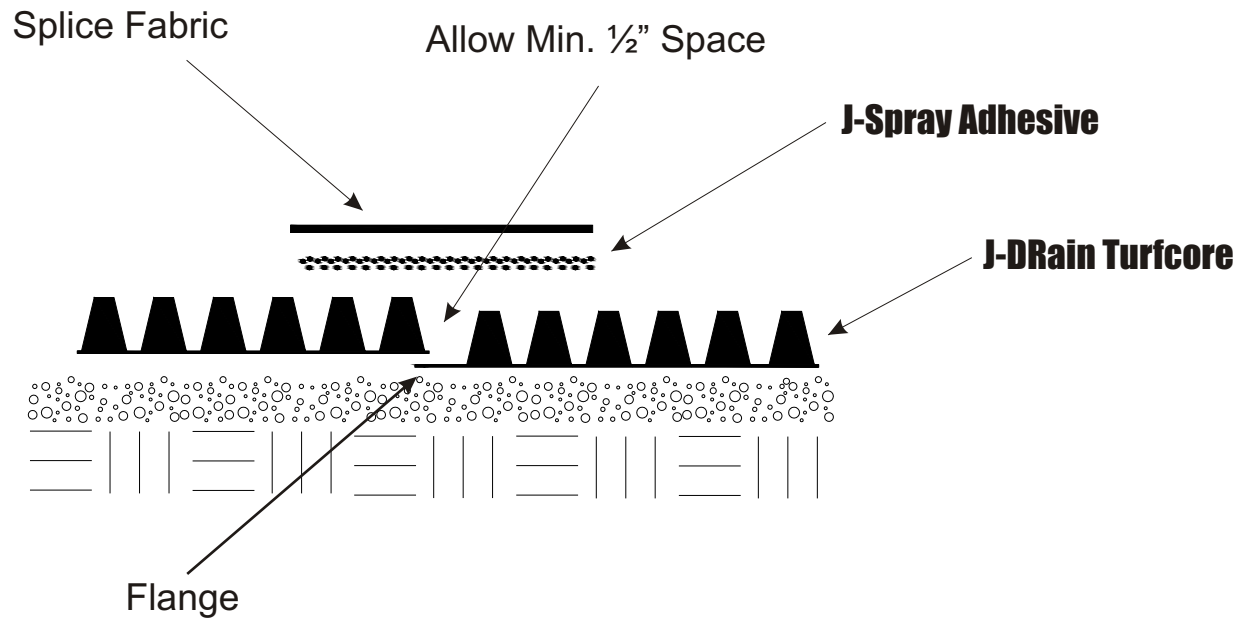
## INSTALLATION INSTRUCTIONS & DETAILS

1. Upon completion of the Perimeter Header, nail **J-DRain SWD-6** to the Header as shown in Detail 2. The edge of the **J-DRain SWD-6** should be flush with the top of the Header as shown.
2. Complete all other field preparations.
3. Start the placement of the **J-DRain Turfcore** along the End Zone from right to left as shown in the Field Detail. The beginning edge of the **J-DRain Turfcore** should begin adjacent to the **J-DRain SWD-6** and the top surface of the **J-DRain Turfcore** should be flush with the top of the Header as shown in Detail 2. Anchoring pins should be installed while unrolling the **J-DRain Turfcore** as shown in the Field Detail and Detail 3.
4. As Roll 1 is being placed, begin unrolling Roll 2 as shown in the Field Detail paying particular attention to the overlap shown in Detail 1. Allow for a minimum  $\frac{1}{2}$ " space of overlap between Roll 1 and Roll 2 as shown to accommodate any potential movement in expansion and contraction. Anchoring pins should be placed similarly to Roll 1.
5. Continue placing Roll 3, Roll 4, etc. In a like manner until the field is covered with **J-DRain Turfcore**. Alternately, **J-DRain Turfcore** can be installed just prior to the Turf placement across the field.
6. All roll Overlaps should be treated as shown in Detail 1. Spray overlap with **J-Spray** and roll on the Fabric Splice across the overlap as shown.
7. Butt Joints occur as one roll ends and another begins as shown in Detail 4. Spray Splice Sheet with **J-Spray** and place under Butt Joint as shown. Spray top of Butt Joint with **J-Spray** and roll on Splice Fabric as shown. Install Anchor Pins as needed as shown in Detail 4.

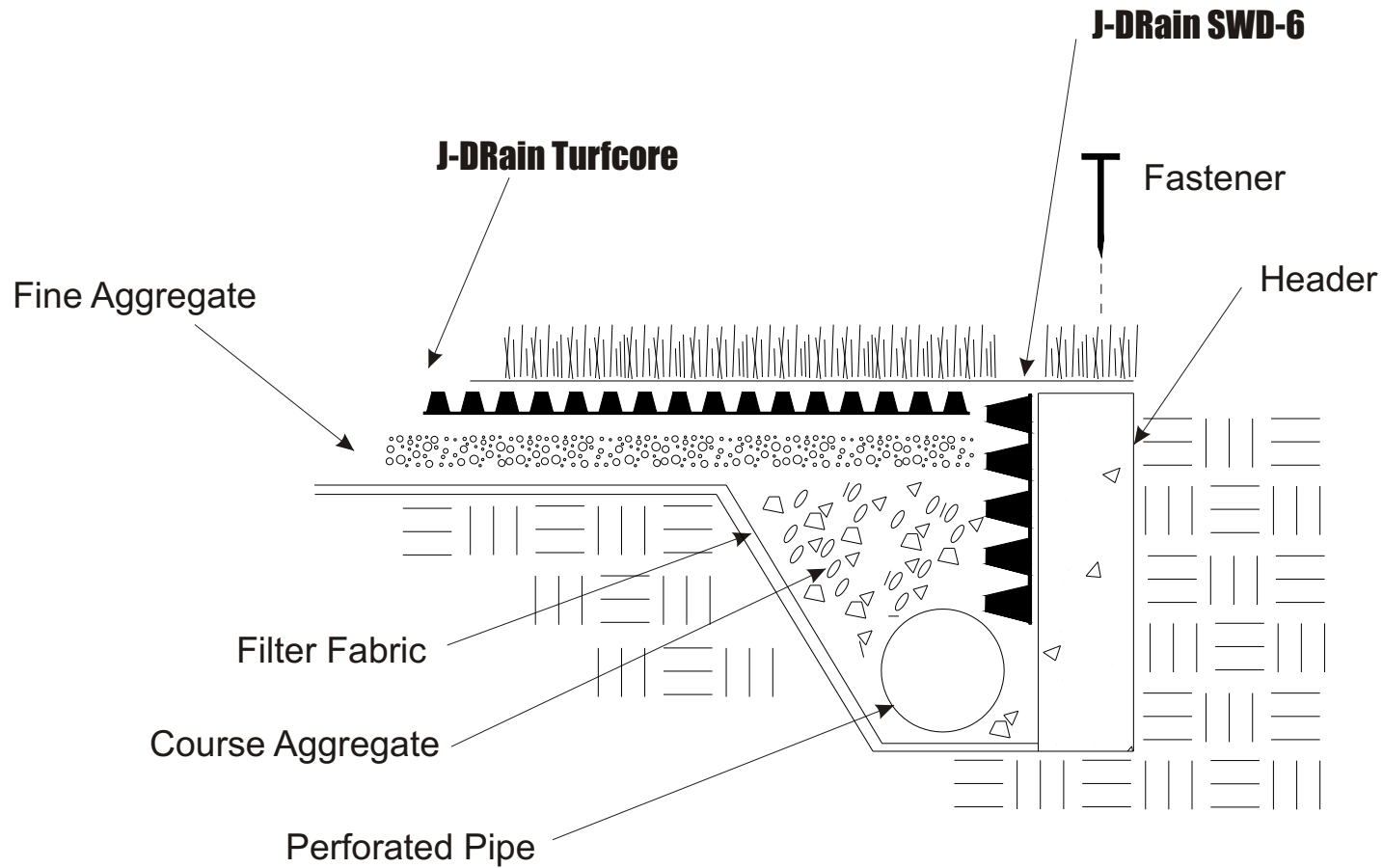
NOTE: PRIOR TO THE INSTALLATION OF **J-DRain Turfcore**, REVIEW ALL INSTALLATION INSTRUCTIONS AND DETAILS WITH AN AUTHORIZED REPRESENTATIVE OF JDR ENTERPRISES, INC.

**J-DRain<sup>®</sup> Turfcore**  
WITH FLEX CONTROL

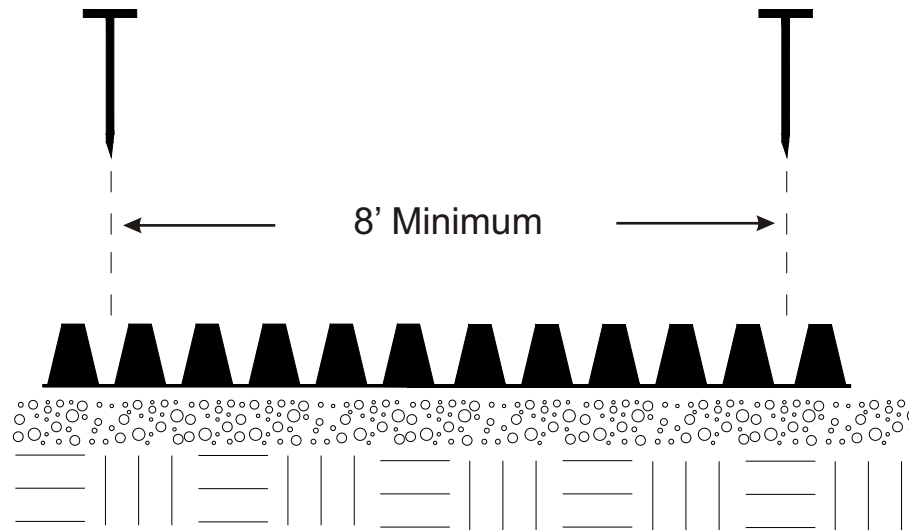
JDR ENTERPRISES, INC.  
292 S. MAIN STREET, SUITE 200, ALPHARETTA, GA 30009  
770 442-1461 800 843-7569 j-drain.com



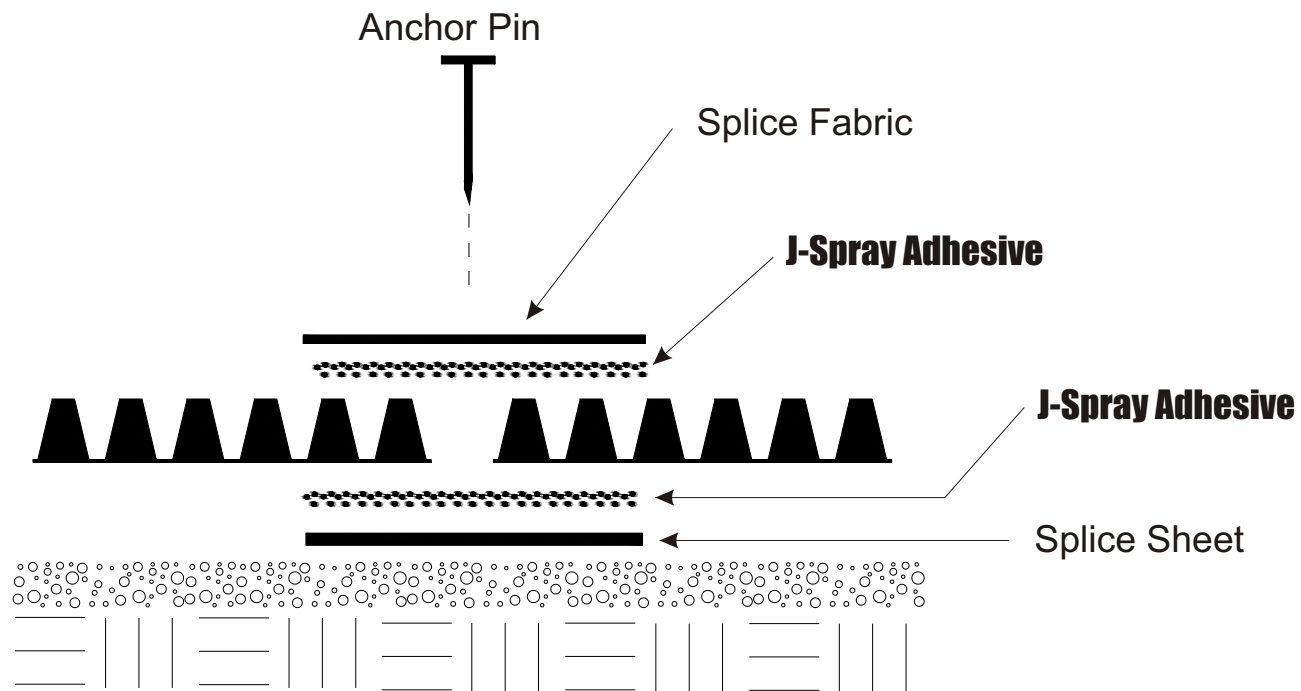
1 OVERLAP DETAIL  
N.T.S.



2 SIDELINE TRENCH DETAIL  
N.T.S.



3 ANCHOR PIN DETAIL  
N.T.S.



4 BUTT JOINT DETAIL  
N.T.S.