

J-DRain®

Prefabricated Drainage Composites



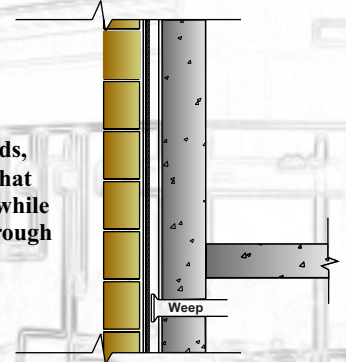
Highway Construction



Lagging Walls

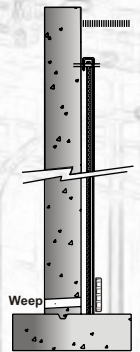
Proper drainage is extremely important when building a lagging wall. In order to avoid the high costs to build the wall to handle heavier loads, **J-DRain 400** series can be installed to reduce the hydrostatic pressure that can build up against the built wall. These products create an air void while the filter fabric retains the soil and particles to allow water to pass through and flow efficiently down the wall to weep holes or the **J-DRain SWD** collection system.

Note: Product can be cut in 1 & 2 ft. widths for chimney application.



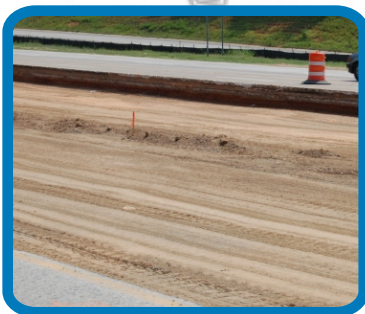
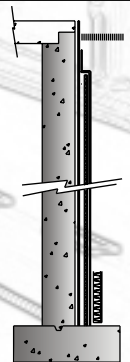
Retaining Walls

J-DRain 200 series, 400 series, & SWD provides a truly unique drainage and collection system when building a retaining wall. Since proper drainage is a critical part of retaining wall construction, the **J-DRain** system consisting of either vertical chimneys or full wall coverage and a base collection system can be installed at a fraction of the cost of pipe and gravel french drains, which can clog and offer low flow rates. These products create an air void while the filter fabric retains the soil and particles to allow water to pass through and flow efficiently down the wall to weep holes or the **J-DRain SWD** collection system. This system helps address hydrostatic pressure or additional pressure caused from water freezes which can cause leaks and failures.



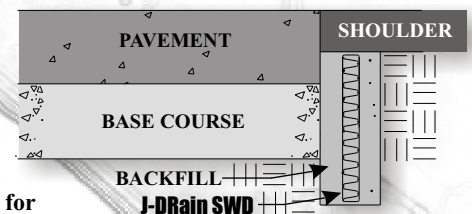
Bridge Abutments

J-DRain 200, 300, & 400 series provides a revolutionary drainage and collection system when constructing bridge abutments. Since proper drainage is a critical part of bridge abutment construction, the **J-DRain** system which combines a wall composite drainage system along with a base collection system can be installed at a fraction of the cost of pipe and gravel french drains, which can clog and offer low flow rates. These products create an air void while the filter fabric retains the soil and particles to allow water to pass through and flow efficiently down the wall to the **J-DRain SWD** collection system. This system helps address hydrostatic pressure or additional pressure caused from water freezes which can cause leaks and failures.



Highway Edge Drain

J-DRain SWD is a technically advanced cost effective alternative for highway edge drains. This composite drainage system consisting of a 3-dimensional, high flow, drainage core and a non-woven filter fabric requires only narrow trenches which eliminates the need for major equipment and reduces the amount of excavation to be removed. The filter fabric is wrapped and bonded to the drainage core, preventing intrusion into the flow channels during the backfilling process. Soil particles are held back by the filter fabric allowing water to pass through to the drainage core to be collected and conveyed to the discharge point.



info@j-drain.com

www.j-drain.com

JDR Enterprises, Inc.

292 S. Main St., Suite 200 Alpharetta, GA 30004
(800) 843-7569 (770) 442-1461 Fax: (770) 664-7951

J-DRain Products & Accessories



Dimple Drain Core

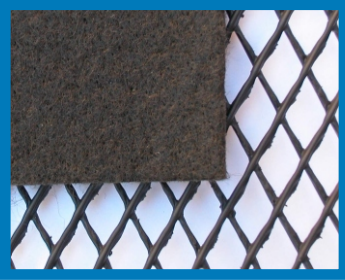
J-DRain 200/220*
[DIMPLE DRAIN CORE /
NON-WOVEN GEOTEXTILE]

An excellent choice for light commercial and residential construction. Maintains a very high flow rate for shallow depths (less than 20'). Use with **J-DRain SWD-6 or SWD-12** Collection System for best results.
Flow rate: 18 gpm Compression: 11,000 psf

J-DRain 400/420*
[DIMPLE DRAIN CORE /
NON-WOVEN GEOTEXTILE]

Maintains a very high flow rate while providing a higher compressive strength for greater depths. A very popular choice for vertical and horizontal single sided drainage applications. Use with **J-DRain SWD-6 or SWD-12** Collection System for best results on vertical applications.
Flow rate: 21 gpm Compression: 15,000 psf

Note: Product can be cut in 1 & 2 ft. widths for chimney application.



Geonet Drain Core

J-DRain 300/302
[VERY HEAVY DUTY GEONET
DRAIN CORE / NON-WOVEN
GEOTEXTILE]

This very heavy duty Geonet Composite has long been the choice of Architects and Engineers for the most rigorous and demanding applications requiring heavy duty vehicular traffic. Most suitable for under slab, split-slab, and other demanding applications. **302** provides for two sided drainage with fabric on both sides for applications such as roadways. Flow rate: 9 gpm Compression: 40,000 psf

J-DRain 1000

[VERY HEAVY DUTY GEONET DRAIN
CORE / NON-WOVEN GEOTEXTILE.
INCLUDES A MEMBRANE PROTECTION
FABRIC BONDED TO BOTTOM SIDE]

1000 is a modified version of **302** with the same demanding applications. It has a special heavy grey geotextile bonded to the bottom side for membrane protection.

Flow rate: 9 gpm Compression: 40,000 psf



Strip Drain Core

J-DRain SWD

J-DRain SWD provides a very economical drainage system for retaining & foundation walls. Fittings are used at corners and transitions to pipe for transferring water to daylight or interior sump. The base collection system is very suitable to be used with other **J-DRain** wall drainage composites.

J-DRain SWD is also used as an interceptor drain or highway edge drain system consisting of a 3-dimensional, high flow, drainage core and a non-woven, needle-punched filter fabric. The filter fabric is wrapped and bonded to the drainage core, preventing intrusion of the filter fabric into the flow channels during the backfilling process. Soil particles are held back by the filter fabric allowing water to pass through to the drainage core, allowing water to be collected and conveyed to the discharge point.

ESR-1901



PHYSICAL PROPERTIES

DRAINAGE CORE	WIDTH	THICKNESS	COMPRESSION	FLOW
PRODUCTS	feet (meters)	(ASTM D 1777) inch (mm)	(ASTM D 1621) psf (kNm ²)	(ASTM D 4716) gal/min/ft (L/min/m)
200/220	4, 6.5, 8.5 (1.22, 1.98, 2.59)	.40 (10.16)	11,000 (527)	18 (223) (HG=1)
400/420	4, 6.5, 8.5 (1.22, 1.98, 2.59)	.40 (10.16)	15,000 (718)	21 (261) (HG=1)
300/302	4, 7 (1.22, 2.13)	.25 (6.35)	40,000 (1915)	8.5 (106) (HG=1)
1000	4 (1.22)	.25 (6.35)	40,000 (1915)	8.5 (106) (HG=1)
SWD	6", 12", 18", 24", 36"	1.0 (25.4)	8,500-11,000 (407-527)	30 (372) (HG=1)

FILTER FABRIC	APPARENT OPENING SIZE	WATER FLOW RATE	GRAB TENSILE	GRAB ELONGATION	PUNCTURE
PRODUCTS	(ASTM D 4751) U.S. STAND. SIEVE (mm)	(ASTM D 4491) gal/min/ft ² (l/min/m ²)	(ASTM D 4632) lbs. (Kn)	(ASTM D 4632) %	(ASTM D 4833) lbs. (Kn)
200/220 (4ozNW)	70 (0.21)	140 (5704)	100 (0.45)	60	65 (0.30)
400/420 (4ozNW)	70 (0.21)	140 (5704)	100 (0.45)	60	65 (0.30)
300/302 (4ozNW)	70 (0.21)	140 (5704)	100 (0.45)	60	65 (0.30)
1000 (grey6ozNW)	70 (0.21)	140 (5704)	100 (0.45)	50	95 (0.42)
SWD (4ozNW)	70 (0.21)	140 (5698)	100 (0.45)	60	65 (0.30)

The information contained herein is believed by JDR Enterprises, Inc. to be accurate and is offered solely for the customer's consideration, investigation and verification. Determination of suitability for use is the responsibility of the user.

info@j-drain.com

www.j-drain.com

JDR Enterprises, Inc.

292 S. Main St., Suite 200 Alpharetta, GA 30004
(800) 843-7569 (770) 442-1461 Fax: (770) 664-7951