

# J-Barrier

J-DRain®

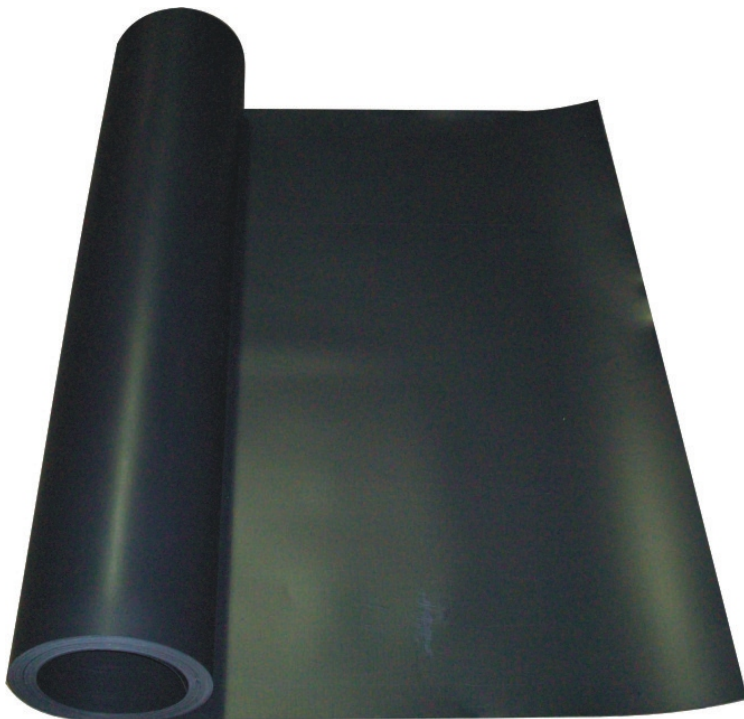
## Product Description:

**J-Barrier** is a solid sheet of 20 mm (0.8") 100% post-industrial polystyrene regrind. Each roll is 4' wide x 100' long (400 square-feet/roll).

## Product Application:

One of the primary objectives of a greenroof is to ensure the integrity of the waterproofing system and the supporting structure. A root barrier is a required component and is generally located within or at the membrane. Most membranes (i.e. hot applied rubberized asphalt, cold fluid applied, built-up bitumen, and modified bitumen) will require a root barrier to repel roots.

When used in conjunction with asphalt and bituminous waterproofing membranes and in assemblies with over 6" depth of growing medium, FM Global requires the use of a root barrier with a thickness of at least 0.03" (0.8mm). They require seams be lapped by 6" (150 mm), welded a minimum of 1.5" (38 mm), and tested. For projects not requiring FM Global Standards, seams can be overlapped and secured using J-Tape, a waterproofing tape.



## APPLICATIONS:

**GREENROOFS**  
**PLANTERS**

## Physical Properties

Material:	Polystyrene
Width:	4'
Length:	100'
Thickness:	20 mm (0.8")

The information contained herein is believed by JDR Enterprises, Inc. to be accurate and is offered solely for the customer's consideration, investigation and verification. Determination of suitability for use is the responsibility of the user.

[info@j-drain.com](mailto:info@j-drain.com)

[www.j-drain.com](http://www.j-drain.com)

**JDR Enterprises, Inc.**

292 S. Main St., Suite 200 Alpharetta, GA 30009  
(800) 843-7569 (770) 442-1461 Fax: (770) 664-7951