

# J-Drain INSTALLATION GUIDELINES

For more information contact:  
or: [www.j-drain.com](http://www.j-drain.com)

**JDR ENTERPRISES, INC. 770 442-1461**  
**800 843-7569**

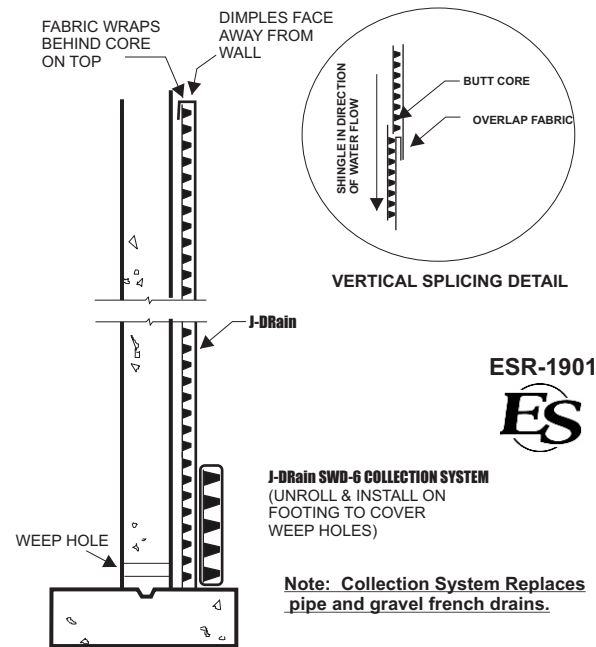
## RETAINING WALL INSTALLATIONS (No Waterproofing Membrane)

**Collection and Discharge** Unroll and install **J-Drain SWD-6 OR 12** along footing and attach to wall covering weep holes for uniform collection and discharge to weep holes.

**J-Drain** Panels are installed above the **J-Drain SWD** Collection System as shown in detail. Panels are butted and the filter fabric is shingled as shown in the Splicing Detail. **ALL FACTORY EDGES AND CUT EDGES SHOULD BE COVERED WITH FILTER FABRIC EITHER BY OVERLAPPING EDGE OR COVERING WITH EXCESS FILTER FABRIC.**

**Attachment Method:** On concrete substrates, use mechanical fasteners, i.e., Nailing or powder actuated fasteners. On waterproofing substrates, use construction adhesives that are compatible with the waterproofing membrane. **DIMPLES & FILTER FABRIC ALWAYS FACES BACKFILL.**

**Backfilling:** Backfill as soon as possible not exceeding 5 - 7 days. Backfill in lifts and compact each lift. Backfill should extend at least 6" over top of panels.



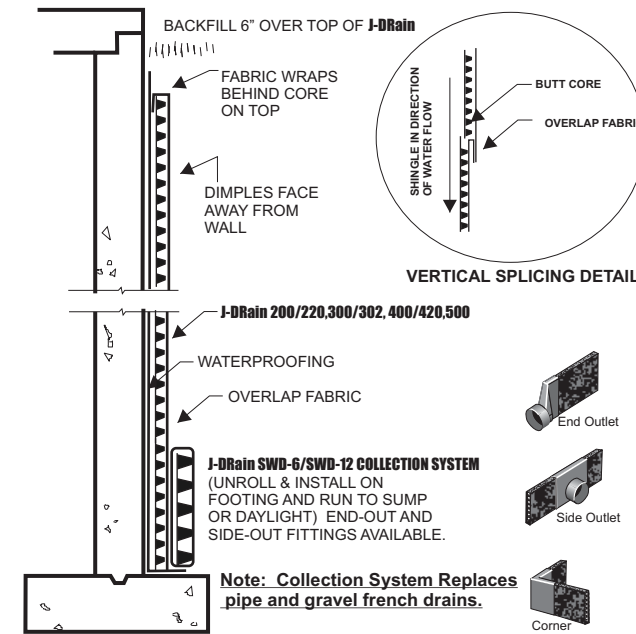
## FOUNDATION WALL INSTALLATIONS (With Waterproofing Membrane)

**Collection and Discharge** Unroll and install **J-Drain SWD-6 OR 12** along footing and attach to wall covering weep holes for uniform collection and discharge to weep holes.

**J-Drain** Panels are installed above the **J-Drain SWD** Collection System as shown in detail. Panels are butted and the filter fabric is shingled as shown in the Splicing Detail. **ALL FACTORY EDGES AND CUT EDGES SHOULD BE COVERED WITH FILTER FABRIC EITHER BY OVERLAPPING EDGE OR COVERING WITH EXCESS FILTER FABRIC.**

**Attachment Method** On concrete substrates, use mechanical fasteners, i.e., Nailing or powder actuated fasteners. On waterproofing substrates, use constructions adhesives that are compatible with the waterproofing membrane. **DIMPLES & FILTER FABRIC ALWAYS FACES BACKFILL.**

**Backfilling** Backfill as soon as possible not exceeding 5 - 7 days. Backfill in lifts and compact each lift. Backfill should extend at least 6" over top of panels.



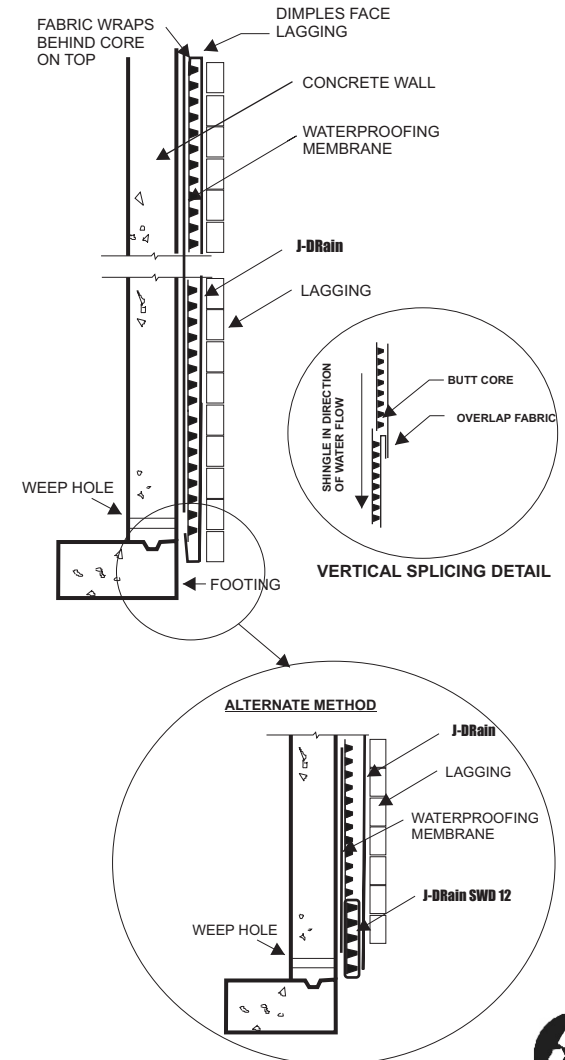
## LAGGING WALL AND SOIL NAILING INSTALLATIONS (With Waterproofing Membrane)

**Collection and Discharge** Unroll and install **J-Drain SWD-6 OR 12** along footing and attach to wall covering weep holes for uniform collection and discharge to weep holes.

**J-Drain** Panels are installed above the **J-Drain SWD** Collection System as shown in detail. Panels are butted and the filter fabric is shingled as shown in the Splicing Detail. **ALL FACTORY EDGES AND CUT EDGES SHOULD BE COVERED WITH FILTER FABRIC EITHER BY OVERLAPPING EDGE OR COVERING WITH EXCESS FILTER FABRIC.**

**Attachment Method** On wood substrate, attach by nailing to lagging wall. On earth substrates, use anchor pins with washers.

**DIMPLES & FILTER FABRIC ALWAYS FACES SOIL.**



## HORIZONTAL INSTALLATIONS:

**Unrolling Panels** Starting along edge of horizontal area, unroll panel while folding fabric over edge adjacent to starting edge. On sloped surfaces, unroll in direction of slope. **Filter fabric faces top side.** Adjacent panels should be unrolled and splices should be performed as shown in **Splicing Detail**.

**EDGES** All factory edges and/or cut edges must be covered with filter fabric to prevent intrusion of cover material ( soil, sand, concrete, etc.)

**EXPOSURE** Do not leave exposed to intensive sunlight for extended periods of time (5-7 days )

