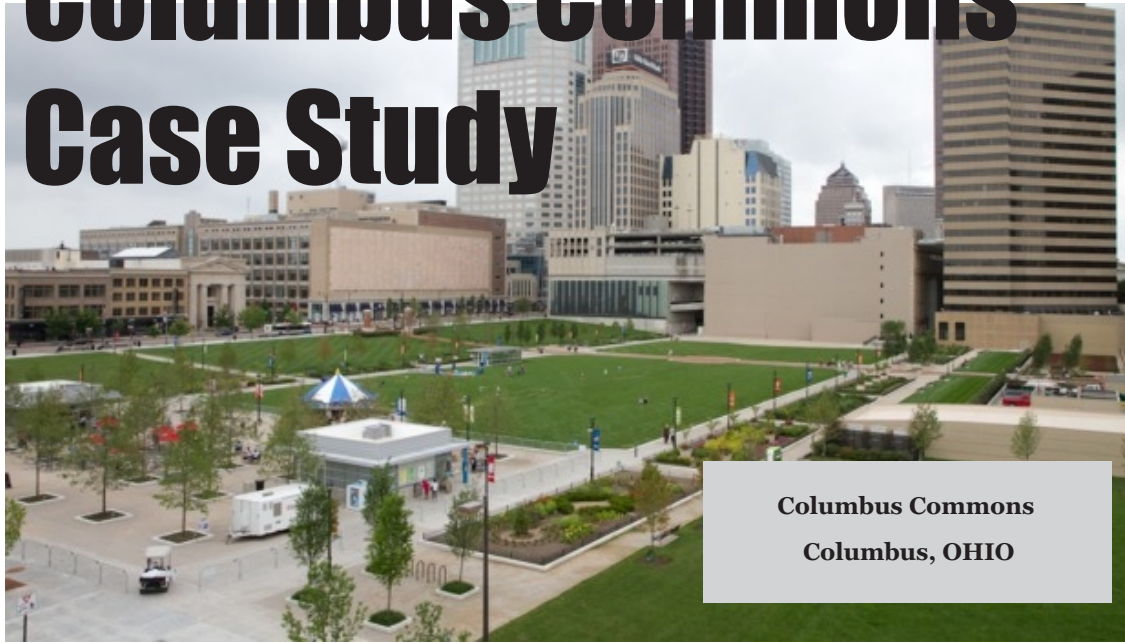
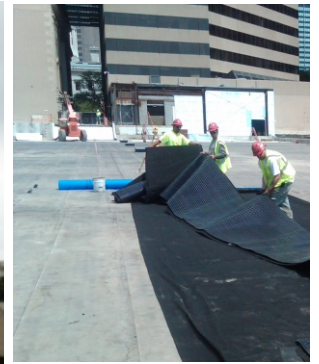


# Columbus Commons Case Study



Columbus Commons  
Columbus, OHIO



Installation of J-DRain  
Green Roof System (GRS)



## Project Description & Details

Columbus Commons is a 9-acre \$20 million park and green space in the heart of downtown Columbus, Ohio located on the site of the former Columbus City Center Mall. Visitors enjoy the state-of-the-art Columbus Bicentennial Pavilion, hand-carved carousel, outdoor reading room, world-class gardens, outdoor cafes, bocce courts, a life-size chess set and more.

The park itself is actually a 6-acre greenroof over an underground parking garage and includes a \$5 million permanent stage and pavilion, which have become key downtown focal points. A total of 168,000 sq/ft of [J-DRain](#) GRS drain mat was installed on top of the waterproofing. The new Columbus Commons is a common area for the entire community to enjoy, and the park supports the ongoing, market-driven development of a truly walkable downtown neighborhood that integrates living spaces with retail office and entertainment opportunities.

### Project Info:

**Year:** 2011

**Owner:** Downtown Development Corporation & Capitol South Community Urban Redevelopment Corporation

**Location:** Columbus, OH, USA

**Building Type:** Multi-Use

**Type:** Semi-Intensive

**System:** Custom

**Size:** 168,000 sq. ft.

**Slope:** 1%

**Access:** Accessible, Open to Public

### Designers/Manufacturers of Record:

**Architect:** Moody Nolan

**Landscape Architect:** EDGE Group

**Construction Manager:** Corna-Kokosing

**Mechanical, Electrical, Plumbing, Fire**

**Protection & Security System Design:** ms consultants

**Waterproofing:** Henry Company

**Installation:** Phinney Industrial Roofing

**Drainage:** J-DRain GRS, JDR Enterprises, Inc.

[info@j-drain.com](mailto:info@j-drain.com)

[www.j-drain.com](http://www.j-drain.com)

**JDR Enterprises, Inc.**

292 S. Main St., Suite 200 Alpharetta, GA 30009  
(800) 843-7569 (770) 442-1461 Fax: (770) 664-7951