



# J•DRAIN<sup>®</sup>

Prefabricated Drainage Systems



## APPLICATIONS

**BASEMENT FOUNDATIONS**

**RETAINING WALLS**

**PLANTERS**

## J•DRAIN<sup>®</sup> 150 Series

### J•DRAIN 150

Performs a multi-faceted role by providing protection for waterproofing systems and managing sub-surface water around building foundations. Consists of a light duty impermeable low profile polymeric sheet cusped under heat and pressure to form a high flow dimpled drainage core. The core is then bonded layer of non-woven filter fabric. The filter fabric retains soil or sand particles as well as freshly placed concrete or grout, allowing filtered water to pass into the drainage core. Collected water is then conveyed to a proper collection system.

### J•DRAIN 150 T

Consists of **J•DRAIN 150** core, but bonded to a layer of heat treated filter fabric.

### J•DRAIN 152

Identical properties to **J•DRAIN 150** with the addition of a protection sheet bonded to the back side of the cusped core providing protection for soft membrane waterproofing systems.

[info@j-drain.com](mailto:info@j-drain.com)

[www.j-drain.com](http://www.j-drain.com)

**JDR** Enterprises, Inc.

292 S. Main St., Suite 200 Alpharetta, GA 30009  
(800) 843-7569 (770) 442-1461 Fax: (770) 664-7951

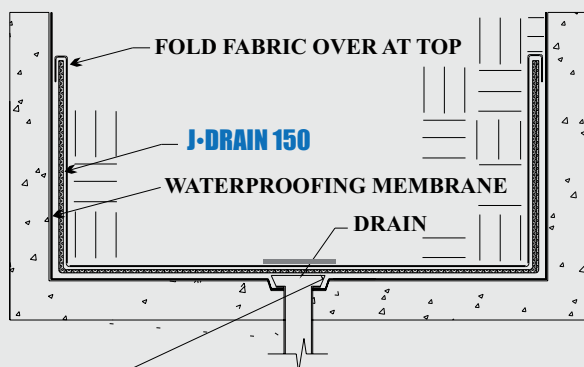


# J-DRAIN<sup>®</sup>

## 150 SERIES

### APPLICATIONS:

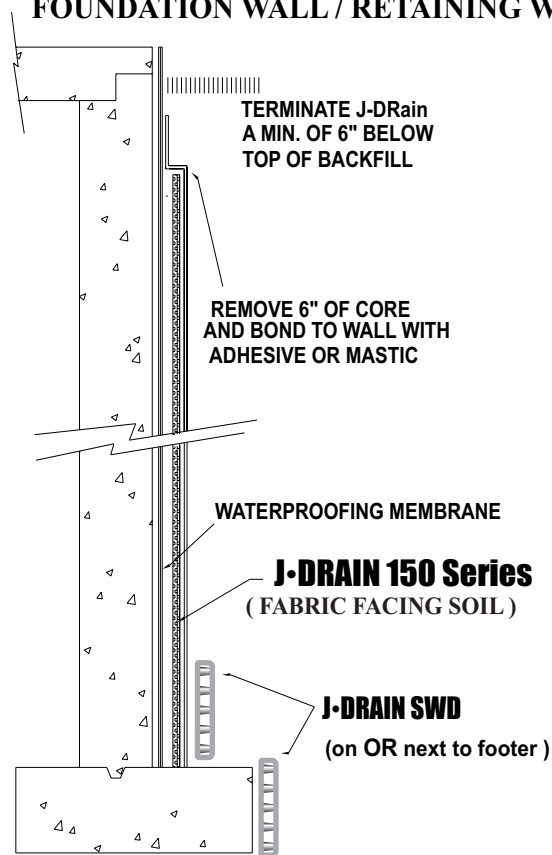
#### PLANTERS & ROOF GARDENS



**NOTE:** When using J-DRAIN 150 series cut and remove drainage core and cover with an aluminum plate as shown.

### APPLICATIONS:

#### FOUNDATION WALL / RETAINING WALL



### Physical Properties

#### Core

Compressive Strength (ASTM D-1621)	5,200 psf (249 kNm <sup>2</sup> )
Thickness (ASTM D-1777)	.31 in. (7.87 mm)
Flow (Hydraulic gradient =1) (ASTM D-4716)	12.4 g/min/ft (154 L/min/m)

#### Roll

Roll Weight	35, 52, 70 lbs.	16, 23, 32 kgs.
Roll Width	4, 6, 8 ft.	1.22, 1.83, 2.44 meters
Roll Length	65 ft.	19.81 meters

#### Fabric

	<i>J-Drain 150 &amp; 152 Black Non-Woven</i>		<i>J-Drain 150T Grey Heat Treated</i>	
Flow (ASTM D-4491)	160 gpm/ft <sup>2</sup>	(6519 l/min/m <sup>2</sup> )	90 gpm/ft <sup>2</sup>	(3657 l/min/m <sup>2</sup> )
CBR Puncture (ASTM D-6241)	210 lbs.	(934 N)	300 lbs.	(1.32 kN)
AOS (ASTM D-4751)	70 U.S. Sieve	(.212 mm)	70 U.S. Sieve	(.212 mm)
Grab Tensile (ASTM D-4632)	80 lbs.	(356 N)	120 lbs.	(.54 kN)
U.V. Resistance (ASTM D-4355)	70% @500 hrs.		70% @500hrs.	

The information contained herein is believed by JDR Enterprises, Inc. to be accurate and is offered solely for the customer's consideration, investigation and verification. Determination of suitability for use is the responsibility of the user. JDR's Limitations, Limited Warranty, & Disclaimer along with Standard Terms & Conditions apply. See [www.j-drain.com](http://www.j-drain.com) for more info. **Limitations:** J-Drain is resistant to chemicals in normal soil environments. However, some reagents may affect the performance of J-Drain. A JDR representative should be contacted for further information to determine the suitability of use of J-Drain in unusual soil environments. J-Drain should be backfilled or covered within seven days of installation. **Disclaimer:** All information, drawings and specifications are based on the latest published information at the time of printing. JDR reserves the right to make changes due to manufacturing improvements and engineering at any time. All physical properties are minimum average roll values (MARV). Standard variations of 10% in mechanical properties and 15% in hydraulic properties are normal.

[info@j-drain.com](mailto:info@j-drain.com)

[www.j-drain.com](http://www.j-drain.com)



Enterprises, Inc.

292 S. Main St., Suite 200 Alpharetta, GA 30009  
(800) 843-7569 (770) 442-1461 Fax: (770) 664-7951